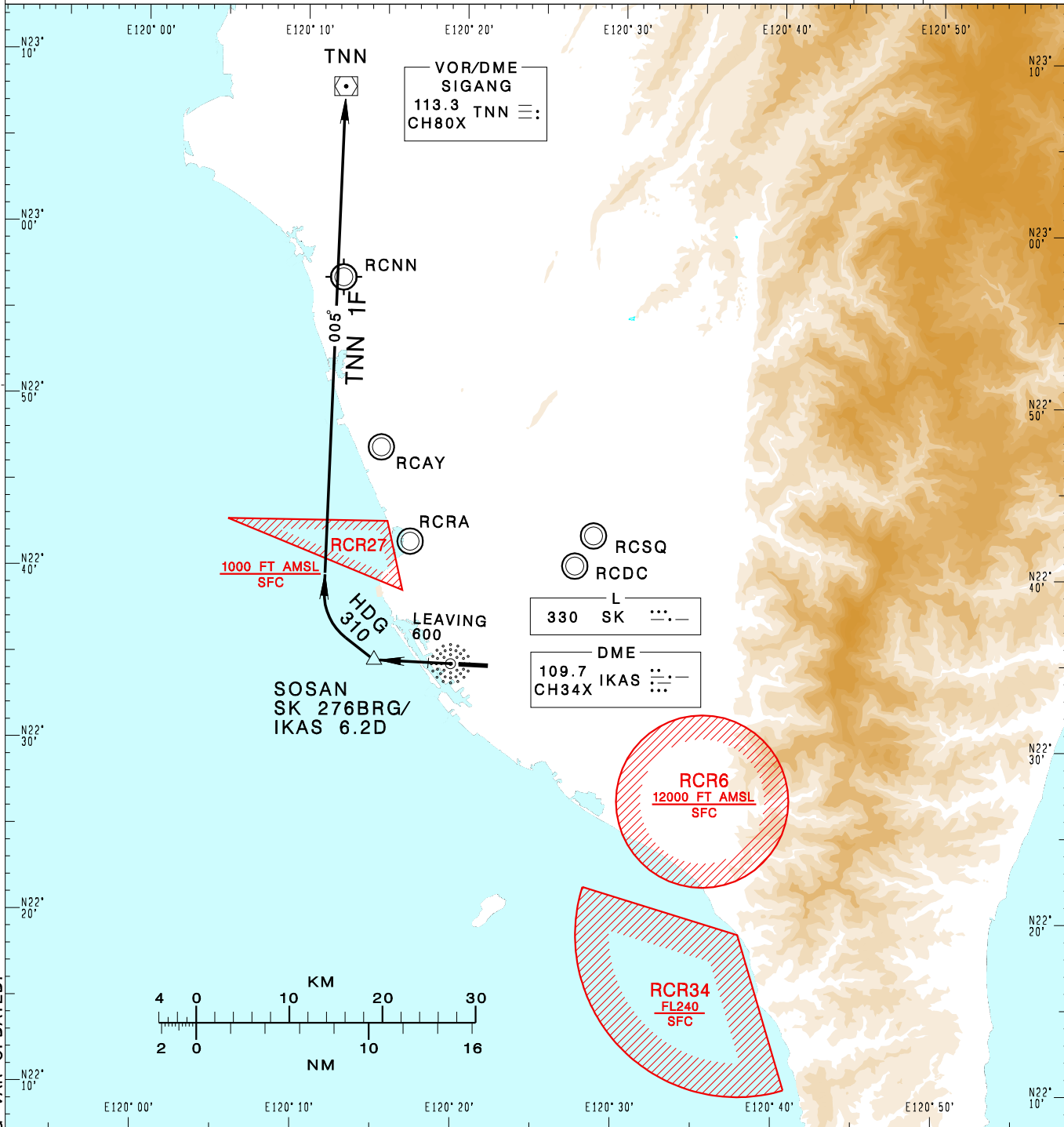


高雄國際機場
KAOHSIUNG INTL AD

RCKH SID
TNN 1F(RWY27)

KAOHSIUNG APP 124.7 125.7	KAOHSIUNG TWR 118.7 120.7	ATIS 127.8	 MSA APP 25NM	
Apt Elev: 32'		Trans Level: FL130		Trans Alt: 11,000'
BEARINGS ARE MAGNETIC; DISTANCES ARE NAUTICAL MILES; ELEVATIONS, HEIGHTS IN FEET				



CHANGES: MSA AND MAG VAR UPDATED.

SIGANG ONE FOXTROT DEPARTURE
Climb on RWY HDG until leaving 600ft, then track SK 276BRG to SOSAN, then turn right HDG 310 to track TNN R-185 to TNN.

NOTE
1. Minimum climb gradient required: 4%(245ft/NM) until 2,000ft.
2. Caution: pier cranes, terrain and stacks east, west and south of the airport.
3. ATS surveillance required.